

**US 92 PEDESTRIAN & BICYCLE COUNTS**

Location: US 92 from Walker Ave to Ohio Ave

Weather: Sunny

Day/Date: 2/2/16

10-11 am	Bicycle	1			1
	Pedestrian	7			5
11-12 pm	Bicycle	1	1	4	
	Pedestrian	8			
12-1 pm	Bicycle				3
	Pedestrian	2	8		6
1-2 pm	Bicycle				
	Pedestrian		4	5	3
3-4 pm	Bicycle	1		2	
	Pedestrian	3	3	6	4
4-5 pm	Bicycle	1	1	3	1
	Pedestrian	4	3	1	4
5-6 pm	Bicycle	2	1	4	5
	Pedestrian		2	10	10
6-7 pm	Bicycle		2	3	
	Pedestrian	1	6	9	5
7-8 pm	Bicycle		2	3	
	Pedestrian		3	11	3
8-9 pm	Bicycle				
	Pedestrian		3	3	3

N



10-11 am	Bicycle	2			4
	Pedestrian	1			10
11-12 pm	Bicycle	2			
	Pedestrian	9			
12-1 pm	Bicycle	2	2	2	2
	Pedestrian	3	6	3	10
1-2 pm	Bicycle	1	1	3	1
	Pedestrian	1	5	3	4
3-4 pm	Bicycle		4	5	1
	Pedestrian	2	4	3	
4-5 pm	Bicycle	2	2	3	1
	Pedestrian		8	11	12
5-6 pm	Bicycle	2	2	6	8
	Pedestrian		1	14	15
6-7 pm	Bicycle			3	4
	Pedestrian	3	1	17	3
7-8 pm	Bicycle		2	4	1
	Pedestrian		3	9	9
8-9 pm	Bicycle				
	Pedestrian			3	6

Top rows are the Southbound crossings  
Bottom rows are the Northbound crossings

**US 92 PEDESTRIAN & BICYCLE COUNTS**

**Location:** US 92 from Ohio Ave to Texas Ave

**Weather:** Sunny

**Day/Date:** 2/2/16

10-11 am	Bicycle					
	Pedestrian	3		2	6	5
11-12 pm	Bicycle				2	
	Pedestrian				1	
12-1 pm	Bicycle			1		
	Pedestrian	4	1			2
1-2 pm	Bicycle					
	Pedestrian	1	1	3		2
3-4 pm	Bicycle	2				
	Pedestrian	4		4		
4-5 pm	Bicycle		3			1
	Pedestrian			1		7
5-6 pm	Bicycle	2	2			1
	Pedestrian	6	6			6
6-7 pm	Bicycle	1				
	Pedestrian	6				
7-8 pm	Bicycle	1				2
	Pedestrian	4		2		
8-9 pm	Bicycle					
	Pedestrian					5

N



10-11 am	Bicycle				2	
	Pedestrian	1		1	2	
11-12 pm	Bicycle					
	Pedestrian					
12-1 pm	Bicycle		1			2
	Pedestrian		3			
1-2 pm	Bicycle		3			
	Pedestrian					2
3-4 pm	Bicycle	2				
	Pedestrian	7		3		
4-5 pm	Bicycle		4			3
	Pedestrian		5	1		5
5-6 pm	Bicycle		5	1		
	Pedestrian		4			4
6-7 pm	Bicycle		3			
	Pedestrian		8			
7-8 pm	Bicycle		2			
	Pedestrian		4			2
8-9 pm	Bicycle					3
	Pedestrian					2

**Top rows are the Southbound crossings  
Bottom rows are the Northbound crossings**

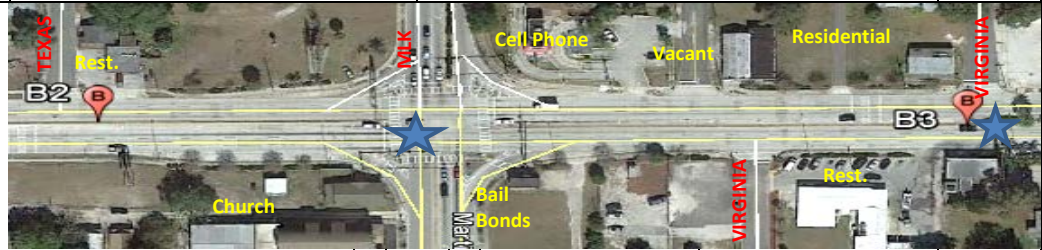
**US 92 PEDESTRIAN & BICYCLE COUNTS**

LOCATION: US 92 from Texas Ave to Virginia Ave

Weather: Sunny

Day/Date: 2/2/16

10-11 am	Bicycle		6	
	Pedestrian		3	
11-12 pm	Bicycle		3	
	Pedestrian		3	1
12-1 pm	Bicycle		4	
	Pedestrian		4	
1-2 pm	Bicycle		5	2
	Pedestrian		3	
3-4 pm	Bicycle		7	4
	Pedestrian		3	2
4-5 pm	Bicycle		2	
	Pedestrian		8	6
5-6 pm	Bicycle		5	2
	Pedestrian		6	2
6-7 pm	Bicycle		2	
	Pedestrian		1	1
7-8 pm	Bicycle		6	
	Pedestrian		1	
8-9 pm	Bicycle			
	Pedestrian		2	



10-11 am	Bicycle		2	
	Pedestrian		6	
11-12 pm	Bicycle		4	
	Pedestrian		4	
12-1 pm	Bicycle		10	2
	Pedestrian		9	
1-2 pm	Bicycle			1
	Pedestrian		3	
3-4 pm	Bicycle		5	1
	Pedestrian		2	2
4-5 pm	Bicycle		3	1
	Pedestrian		2	
5-6 pm	Bicycle		3	
	Pedestrian		6	3
6-7 pm	Bicycle		5	2
	Pedestrian		4	4
7-8 pm	Bicycle		8	
	Pedestrian			
8-9 pm	Bicycle			
	Pedestrian			

Top rows are the Southbound crossings  
Bottom rows are the Northbound crossings

**US 92 PEDESTRIAN & BICYCLE COUNTS**

LOCATION: US 92 from Virginia Ave to Florida Ave

Weather: Sunny

Day/Date: 2/2/16

10-11 am	Bicycle					
	Pedestrian					3
11-12 pm	Bicycle					
	Pedestrian		1			
12-1 pm	Bicycle					1
	Pedestrian		4	4		
1-2 pm	Bicycle					
	Pedestrian					
3-4 pm	Bicycle		2	1		1
	Pedestrian					1
4-5 pm	Bicycle					2
	Pedestrian		6	6		5
5-6 pm	Bicycle		2	1		1
	Pedestrian		2	2		
6-7 pm	Bicycle					
	Pedestrian		2			
7-8 pm	Bicycle		1			
	Pedestrian					
8-9 pm	Bicycle					
	Pedestrian					



10-11 am	Bicycle			1	1	
	Pedestrian			1		
11-12 pm	Bicycle				1	
	Pedestrian					
12-1 PM	Bicycle			3	4	
	Pedestrian			2	2	2
1-2 PM	Bicycle				1	
	Pedestrian					1
3-4 pm	Bicycle			1	1	
	Pedestrian			3	1	
4-5 pm	Bicycle			1	1	1
	Pedestrian					
5-6 pm	Bicycle				2	
	Pedestrian			5	2	2
6-7 pm	Bicycle			1	1	
	Pedestrian					
7-8 pm	Bicycle					2
	Pedestrian			1	1	1
8-9 pm	Bicycle					
	Pedestrian					

Top rows are the Southbound crossings  
 Bottom rows are the Northbound crossings

**US 92 PEDESTRIAN & BICYCLE COUNTS**

LOCATION: US 92 from Florida Ave to Kentucky Ave

Weather: Sunny

Day/Date: 2/2/16

10-11 am	Bicycle			1	5
	Pedestrian				
11-12 pm	Bicycle			1	1
	Pedestrian			6	8
12-1 pm	Bicycle			2	2
	Pedestrian			2	2
1-2 pm	Bicycle				
	Pedestrian			1	2
3-4 pm	Bicycle			3	2
	Pedestrian			4	5
4-5 pm	Bicycle			2	3
	Pedestrian			7	3
5-6 pm	Bicycle			2	4
	Pedestrian			2	6
6-7 pm	Bicycle			1	2
	Pedestrian			5	6
7-8 pm	Bicycle				
	Pedestrian			5	5
8-9 pm	Bicycle			1	3
	Pedestrian			2	3

N



10-11 am	Bicycle				
	Pedestrian			6	6
11-12 pm	Bicycle			4	4
	Pedestrian				1
12-1 pm	Bicycle			7	6
	Pedestrian			1	1
1-2 pm	Bicycle				
	Pedestrian				1
3-4 pm	Bicycle			1	1
	Pedestrian			2	5
4-5 pm	Bicycle			1	1
	Pedestrian			6	6
5-6 pm	Bicycle		1	1	2
	Pedestrian		9	9	7
6-7 pm	Bicycle			2	2
	Pedestrian			4	6
7-8 pm	Bicycle				
	Pedestrian			2	4
8-9 pm	Bicycle			2	3
	Pedestrian			1	1

Top rows are the Southbound crossings  
 Bottom rows are the Northbound crossings

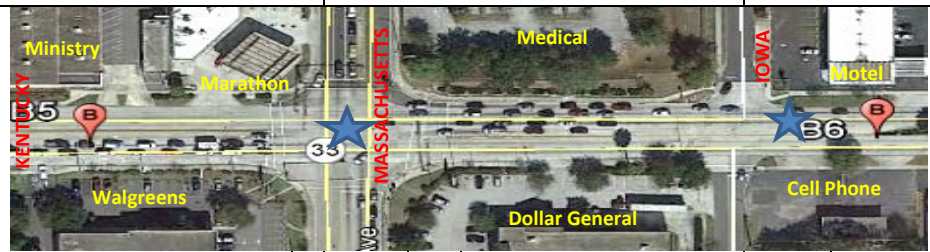
**US 92 PEDESTRIAN & BICYCLE COUNTS**

LOCATION: US 92 from Kentucky Ave to Iowa Ave

Weather: Sunny

Day/Date: 2/2/16

10-11 am	Bicycle		2	2
	Pedestrian	5	14	11
11-12 pm	Bicycle	1		
	Pedestrian	2	3	5
12-1 pm	Bicycle	1	2	
	Pedestrian	4	6	1
1-2 pm	Bicycle	1	2	
	Pedestrian		3	3
3-4 pm	Bicycle			
	Pedestrian	2	6	1
4-5 pm	Bicycle			1
	Pedestrian	2	10	6
5-6 pm	Bicycle			
	Pedestrian		7	1
6-7 pm	Bicycle			1
	Pedestrian	4	3	7
7-8 pm	Bicycle			2
	Pedestrian	2	9	5
8-9 pm	Bicycle			
	Pedestrian	2	7	2



10-11 am	Bicycle			1
	Pedestrian	2	1	6
11-12 pm	Bicycle		2	
	Pedestrian		6	3
12-1 pm	Bicycle		2	
	Pedestrian	3	2	
1-2 pm	Bicycle	1	2	
	Pedestrian		10	
3-4 pm	Bicycle			
	Pedestrian		8	4
4-5 pm	Bicycle		1	
	Pedestrian	2	5	5
5-6 pm	Bicycle			
	Pedestrian	1	4	
6-7 pm	Bicycle		1	
	Pedestrian	1	4	1
7-8 pm	Bicycle			2
	Pedestrian	3	10	1
8-9 pm	Bicycle			
	Pedestrian	4	1	2

Top rows are the Southbound crossings  
 Bottom rows are the Northbound crossings

**US 92 PEDESTRIAN & BICYCLE COUNTS**

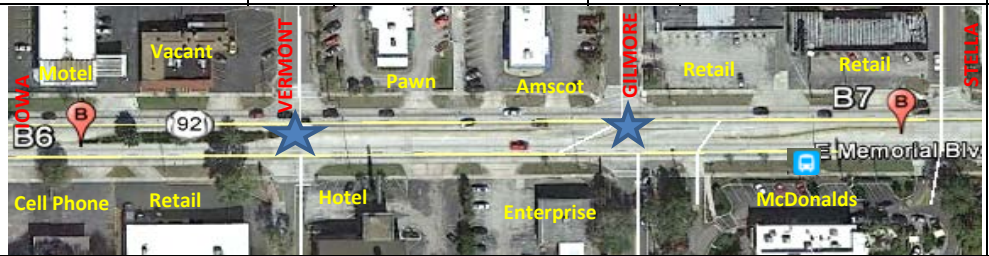
LOCATION: US 92 from Iowa Ave to Stella Ave

Weather: Sunny

Day/Date: 2/2/16

10-11 am	Bicycle	4	5	6
	Pedestrian	8	20	17
11-12 pm	Bicycle			3
	Pedestrian	4	9	16
12-1 pm	Bicycle		1	2
	Pedestrian		4	20
1-2 pm	Bicycle		8	4
	Pedestrian		4	13
3-4 pm	Bicycle		4	10
	Pedestrian		11	15
4-5 pm	Bicycle		3	9
	Pedestrian	2	15	22
5-6 pm	Bicycle		5	10
	Pedestrian		6	17
6-7 pm	Bicycle	6	6	6
	Pedestrian	9	15	13
7-8 pm	Bicycle	2	1	8
	Pedestrian	3	10	14
8-9 pm	Bicycle			10
	Pedestrian		8	21

N



10-11 am	Bicycle		6	5
	Pedestrian	8	9	20
11-12 pm	Bicycle		3	6
	Pedestrian	1	2	23
12-1 pm	Bicycle		1	6
	Pedestrian	2	6	30
1-2 pm	Bicycle	1		3
	Pedestrian	5	5	17
3-4 pm	Bicycle		5	10
	Pedestrian		9	10
4-5 pm	Bicycle		3	9
	Pedestrian	3	20	19
5-6 pm	Bicycle			6
	Pedestrian		13	16
6-7 pm	Bicycle			5
	Pedestrian	3	15	18
7-8 pm	Bicycle			5
	Pedestrian	7	10	5
8-9 pm	Bicycle		3	11
	Pedestrian	9	3	20

**Top rows are the Southbound crossings  
Bottom rows are the Northbound crossings**

**US 92 PEDESTRIAN & BICYCLE COUNTS**

LOCATION: US 92 from Stella Ave to Lakeshore Dr

Weather: Sunny

Day/Date: 2/2/16

10-11 am	Bicycle					
	Pedestrian					
11-12 pm	Bicycle					
	Pedestrian					
12-1 pm	Bicycle					
	Pedestrian					
1-2 pm	Bicycle					
	Pedestrian					
3-4 pm	Bicycle		2			
	Pedestrian		15			
4-5 pm	Bicycle					
	Pedestrian		11			
5-6 pm	Bicycle					
	Pedestrian		9			
6-7 pm	Bicycle					
	Pedestrian		6			
7-8 pm	Bicycle					
	Pedestrian					
8-9 pm	Bicycle		2			
	Pedestrian		6			

N



10-11 am	Bicycle					
	Pedestrian					
11-12 pm	Bicycle					
	Pedestrian		2			
12-1 pm	Bicycle					
	Pedestrian					
1-2 pm	Bicycle					
	Pedestrian					
3-4 pm	Bicycle		6			
	Pedestrian		7			
4-5 pm	Bicycle					
	Pedestrian		2			
5-6 pm	Bicycle					
	Pedestrian		6			
6-7 pm	Bicycle					
	Pedestrian		11			
7-8 pm	Bicycle					
	Pedestrian		2			
8-9 pm	Bicycle		1			
	Pedestrian		9			

**Top rows are the Southbound crossings  
Bottom rows are the Northbound crossings**

**US 92 PEDESTRIAN & BICYCLE COUNTS**

LOCATION: US 92 from Lakeshore to Town Center Entrance

Weather: Sunny

Day/Date: 2/2/16

10-11 am	Bicycle		25	8
	Pedestrian		20	10
11-12 pm	Bicycle		5	4
	Pedestrian		11	5
12-1 pm	Bicycle		13	6
	Pedestrian		21	5
1-2 pm	Bicycle		14	2
	Pedestrian		11	1
3-4 pm	Bicycle		3	10
	Pedestrian		18	5
4-5 pm	Bicycle		4	4
	Pedestrian		8	6
5-6 pm	Bicycle		5	3
	Pedestrian		15	12
6-7 pm	Bicycle		6	7
	Pedestrian		6	8
7-8 pm	Bicycle		3	3
	Pedestrian		11	20
8-9 pm	Bicycle		4	1
	Pedestrian		4	1

N



10-11 am	Bicycle	3	6	3
	Pedestrian	10	4	12
11-12 pm	Bicycle	6	3	6
	Pedestrian	8	10	2
12-1 pm	Bicycle	6	15	6
	Pedestrian	10	18	4
1-2 pm	Bicycle	5	13	2
	Pedestrian	1	2	3
3-4 pm	Bicycle	5	3	3
	Pedestrian	2	14	6
4-5 pm	Bicycle	4	3	11
	Pedestrian	2	6	10
5-6 pm	Bicycle	10	10	10
	Pedestrian	3	6	7
6-7 pm	Bicycle	2	2	12
	Pedestrian	2	3	4
7-8 pm	Bicycle	1	3	7
	Pedestrian	5	1	18
8-9 pm	Bicycle	3	11	2
	Pedestrian	10	3	2

Top rows are the Southbound crossings  
Bottom rows are the Northbound crossings

**US 92 PEDESTRIAN & BICYCLE COUNTS**

LOCATION: US 92 from Town Center to Ingraham

Weather: Sunny

Day/Date: 2/2/16

10-11 am	Bicycle	2			
	Pedestrian	5			
11-12 pm	Bicycle	3			
	Pedestrian	2			
12-1 pm	Bicycle	8			
	Pedestrian	6			
1-2 pm	Bicycle				
	Pedestrian	10			
3-4 pm	Bicycle	1	1		
	Pedestrian	4	4		
4-5 pm	Bicycle	1			
	Pedestrian	7	2		
5-6 pm	Bicycle	1			
	Pedestrian		2		
6-7 pm	Bicycle		4		
	Pedestrian	4		1	
7-8 pm	Bicycle	1	15		
	Pedestrian	1	15		
8-9 pm	Bicycle	1			
	Pedestrian	1			

N



10-11 am	Bicycle	2			
	Pedestrian	5			
11-12 pm	Bicycle	5	7		
	Pedestrian	5			
12-1 pm	Bicycle				
	Pedestrian	1			
1-2 pm	Bicycle				
	Pedestrian				
3-4 pm	Bicycle	3			
	Pedestrian	8			
4-5 pm	Bicycle	3			
	Pedestrian	1			
5-6 pm	Bicycle	2		2	
	Pedestrian	8		3	
6-7 pm	Bicycle	2			
	Pedestrian				
7-8 pm	Bicycle	4			
	Pedestrian	2		1	
8-9 pm	Bicycle	3			
	Pedestrian				

Top rows are the Southbound crossings  
 Bottom rows are the Northbound crossings